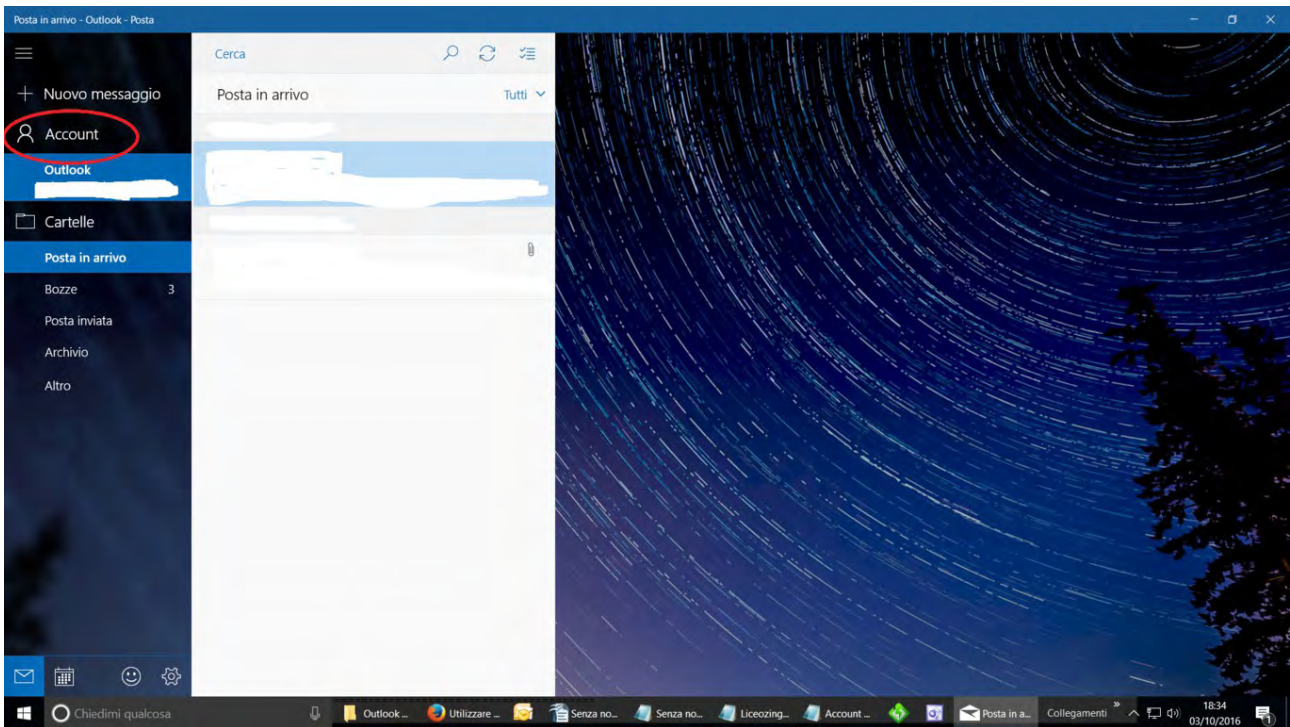
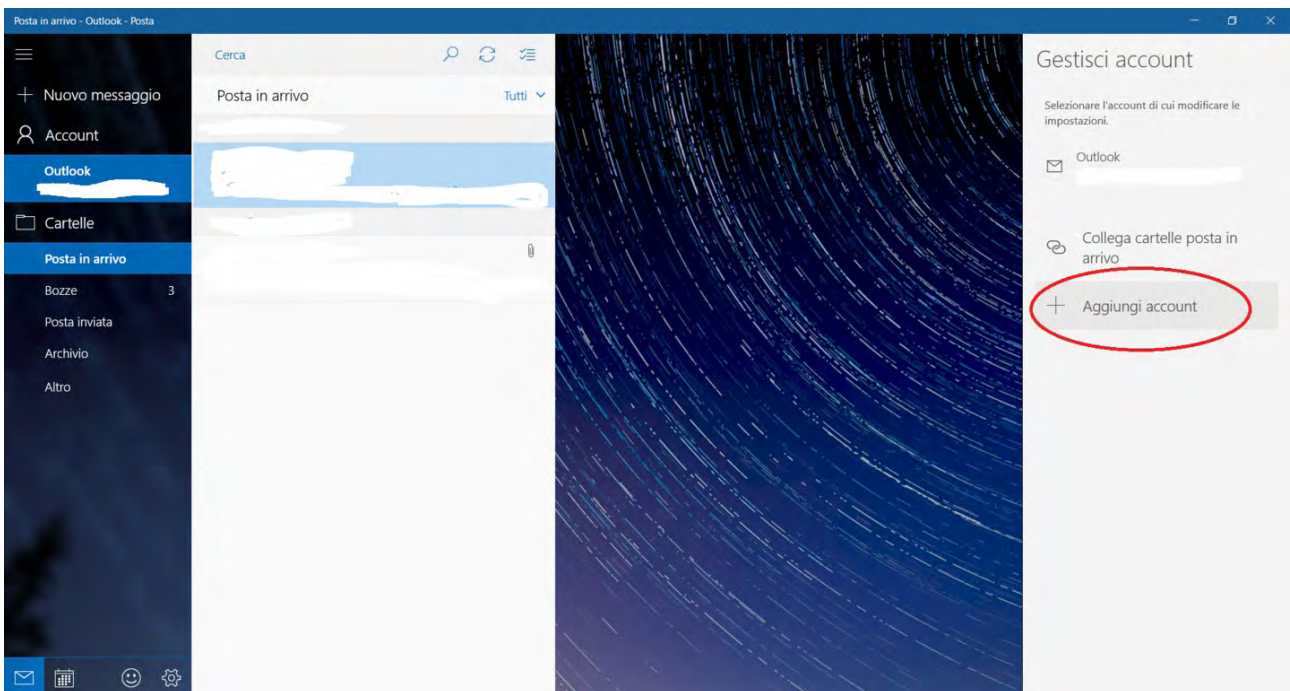


Esempio configurazione email cognome.nome@iisszingarelli.it con Outlook per Windows 10

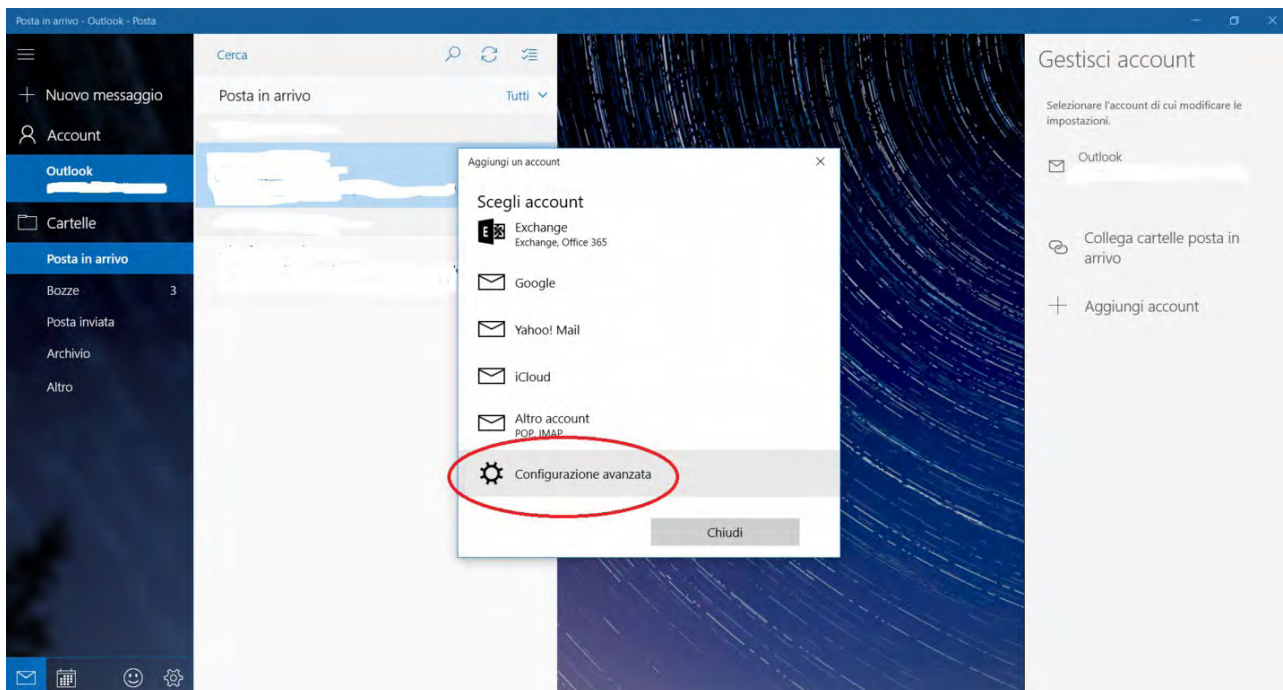
1. Aprire Outlook e cliccare su "Account".



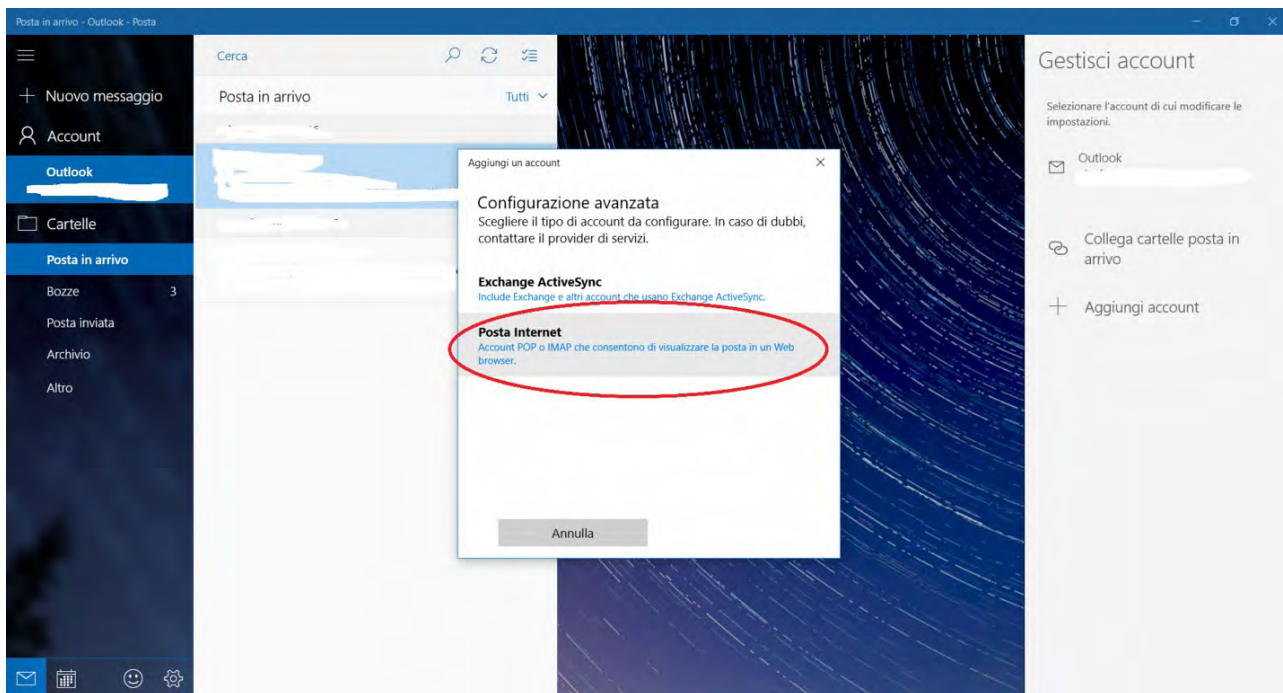
2. Cliccare su "Aggiungi account"



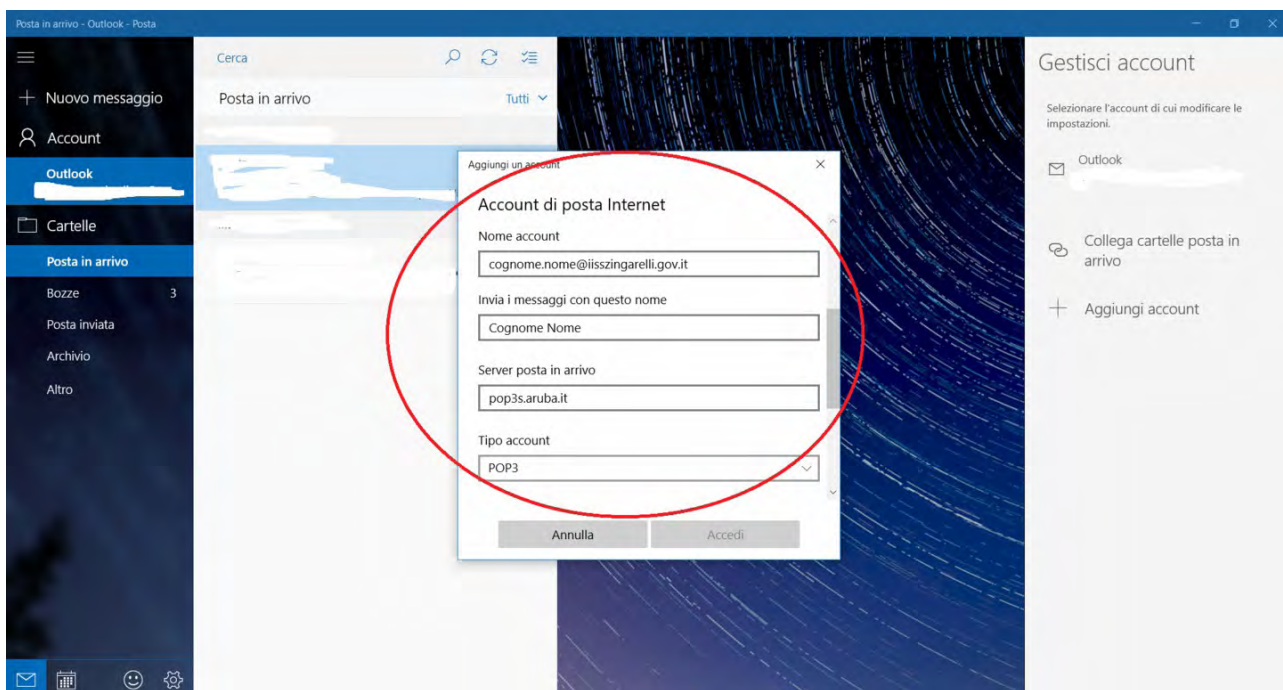
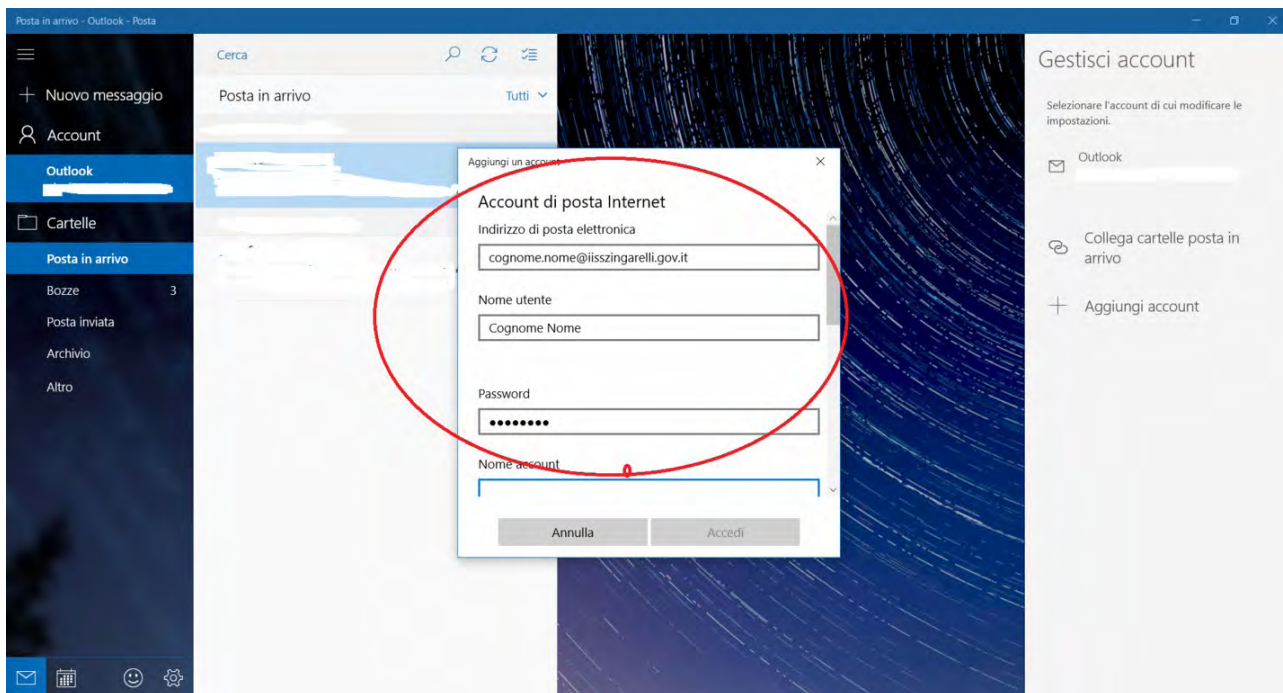
3. Cliccare su "Configurazione avanzata"

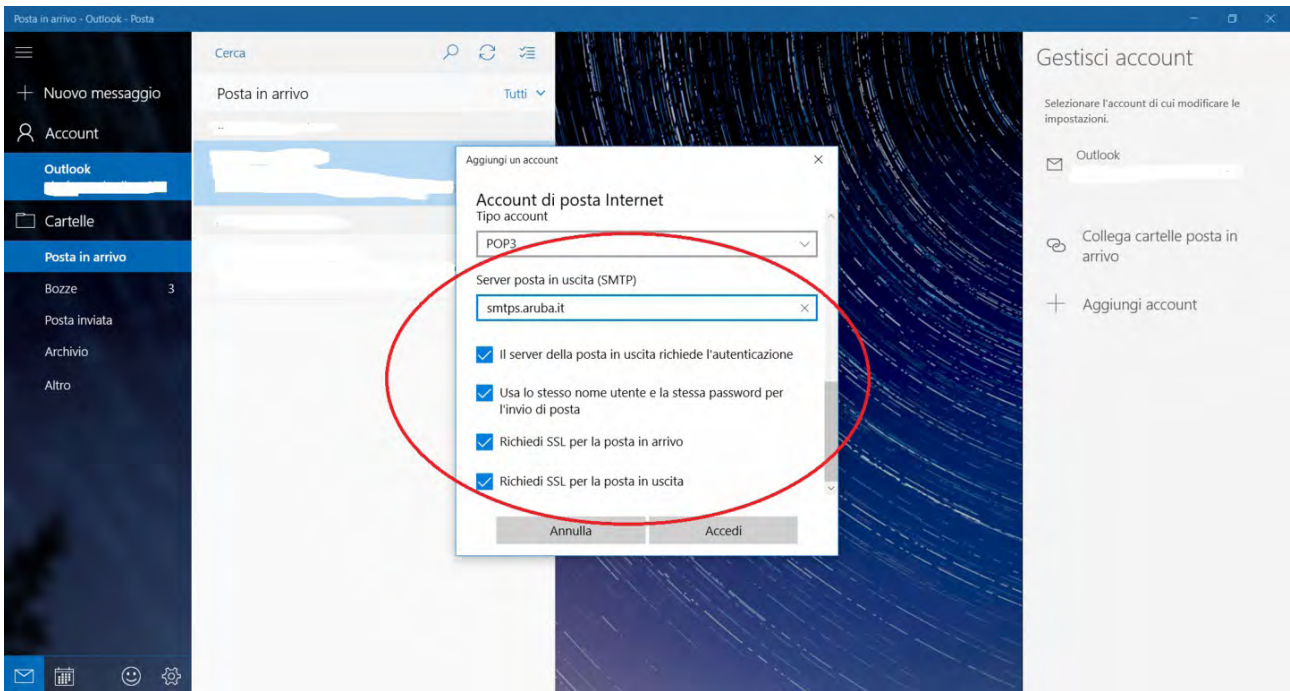


4. Cliccare su "Posta internet"



5. Inserire i dati richiesti, così come illustrato nelle immagini sottostanti:





8. Cliccando su "Accedi" il programma configurerà automaticamente l'account.

